

The background of the image features a light gray, minimalist design of three overlapping circles. These circles are arranged in a way that they create a central area where all three overlap, with the other two circles partially visible around the edges. The overall effect is a subtle, geometric pattern that frames the central text.

# VORTEX

WELLNESS AND RETREAT CENTER

“Nature holds the key to  
our aesthetic, intellectual,  
cognitive & even spiritual  
satisfaction.”

DR. EDUARDO WILSON

# the magic of Sedona



perfect place for spiritual  
and personal enrichment



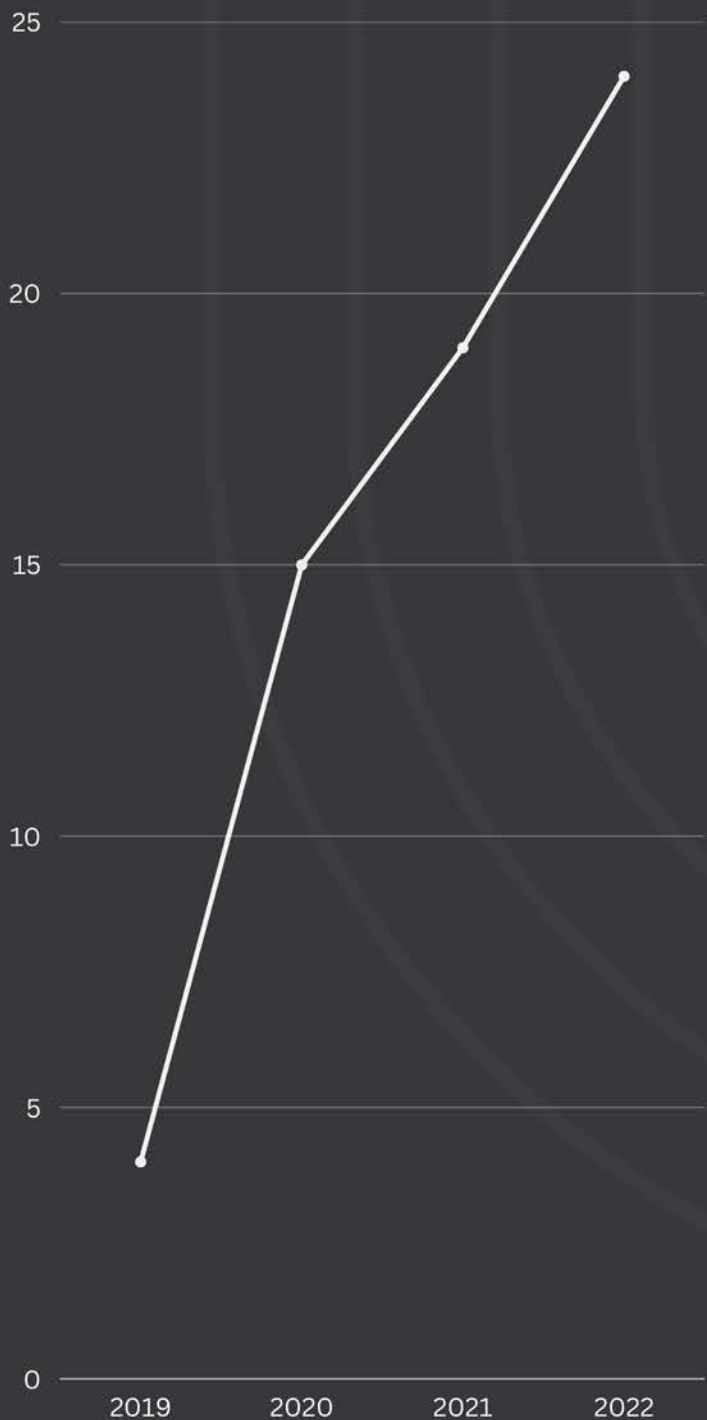
some of the best hiking trails in America



home to powerful energy vortex  
sites allowing profound spiritual growth



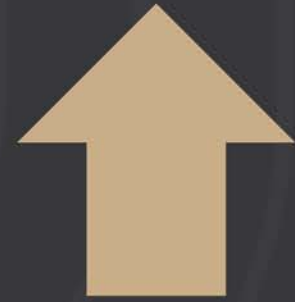
mecca for spiritual and holistic healers.



SEDONA ATTRACTS  
TOURISTS PER YEAR

**3.4 MILLION**

**24%**



in visitation just over the last year

**HAS LED TO:**

- tensions between tourists and residents.
- health and environmental challenges
- increased traffic emissions
- overcrowding

# The Problem

Over-tourism in Sedona has reached a tipping point due to increased popularity and subsequent exploitation of the landscape, leading to significant depletion of its natural environment and affecting the lifestyle of the locals.

# THE SOLUTION

VORTEX is a LEED and WELL accredited retreat designed to educate users and spread awareness on **eco-tourism**. It features a **multi-utility** wellness, meditation, yoga & retreat center as well as an ecological, sustainable lifestyle learning center for tourists and the community.





# SUSTAINABLE TRAVEL & ECO TOURISM

- **Pioneering Ecotourism Destination in Arizona**

Vortex would be one of the pioneers to accommodate green design in popular tourist destinations in America which would help offset the tourist's carbon footprint.

- **One-Stop Destination**

It would offer everything from Rocky Mountain hikes to meditation around a vortex's energy – a one stop destination for tourists to explore every essence of Sedona without the hassle of dealing with traffic and harming the environment.

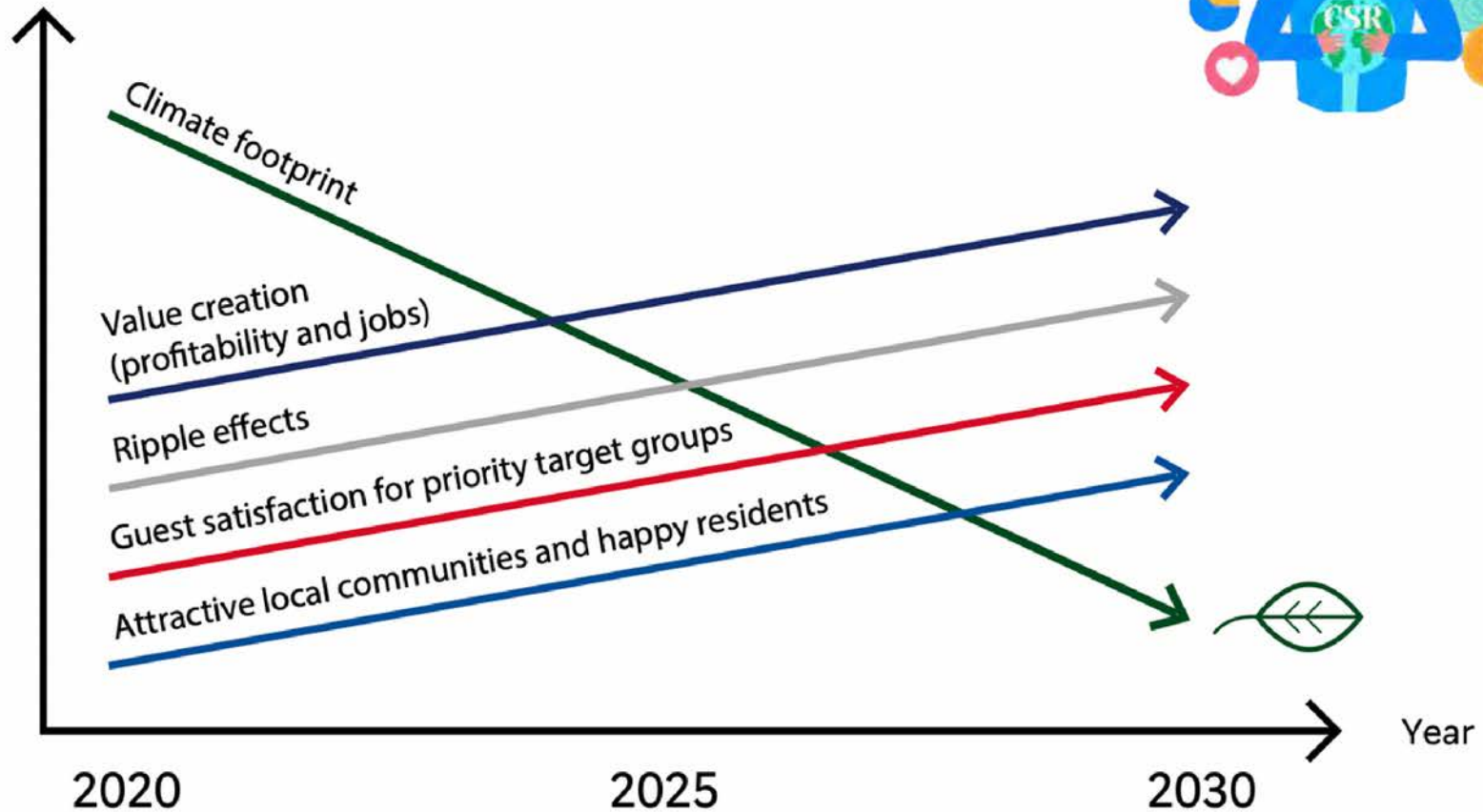
- **The Vortex App**

The Vortex Wellness app would allow remote users to participate in life-altering activities Vortex offers, without them increasing their carbon footprint.

- **Education & Awareness**

The retreat will utilize the design and the use of specialized spaces to holistically improve the healing of the mental and physical health of the user as well as heal the surrounding environment.

# Sustainable Destination Strategy in Norway



Arrows showing Norwegian tourism as we head towards 2030

The award-winning strategy which aims to encourage tourists to visit places in Norway that are labelled by the Sustainable Destination scheme. We aim to achieve similar results through spaces like Vortex encouraging sustainable tourist practices.





# SITE LOCATION



## **Adaptive Reuse Building Location: 525 Boynton Canyon Rd, Sedona, AZ 86336**

- The site is composed of one main building and six freestanding buildings.
- The exterior of the selected site is set against the Red Rocks of Sedona.
- The location is also private and far from main roads for ecotourism practices.
- The building is nestled into the Boynton Canyon, with access to trails directly off the property.
- Nature is seamlessly integrated into the program.
- The current building is located adjacent to an energy vortex field.

# CONCEPT



- Encompasses wellness of mind, body, spirit
- Synthesizing guest experience with the surrounding environment, allowing to feel one with the natural world.
- The design will utilize the gestural movement of nature by pulling inspiration from the natural movements of twisted Juniper trees in Sedona and the red rocks of Arizona in conjunction with the movements of the human body throughout a yoga flow.

# PARTI ELEMENTS



- Boynton Canyon topography allows for visual interest incorporated in design of central focus areas with surrounding circulation.
- It also allows for visually interesting elements to be used on all planes.
- It will also provide textural visual elements in the spaces through finishes.
- Vinyasa study inspires the circulation for the spa buildings.
- It will encourage intersection and connection points with surrounding spaces while allowing for privacy and introspection.



# LEED & WELL



Sustainable  
Sites



Water  
Efficiency



Indoor  
Environmental  
Quality



Materials &  
Resources



Energy &  
Atmosphere



Innovation &  
Design



AIR



WATER



NOURISHMENT



LIGHT



MOVEMENT



THERMAL



SOUND



MATERIALS



MIND



COMMUNITY

## GENERAL NOTES

- majority of materials selected and specified through Mindful Materials
- Plumbing fixtures to be low-flow and utilize grey water
- Natural light integrated in all spaces for optimal well-being of the user and energy efficiency
- main building to run primarily on solar power

## SALMA RAE, 33

Editor in Chief of a fashion magazine  
newly wed to tech multi-millionaire  
Residence: Venice Beach, CA

## IDEAL CUSTOMER



- health conscious
  - loves nature
  - mindfulness
- practices manifestations

- vegan
- timeless
- suave
- believes you are what you surround yourself with



# DANIEL CRAIG, 25

Online Yoga Teacher  
Avid Traveler, part-time DJ  
Residence: Zurich, Switzerland

## IDEAL CUSTOMER



- Vegan
- Active lifestyle
- Loves animals
- Extrovert
- Hiker
- Adventurer

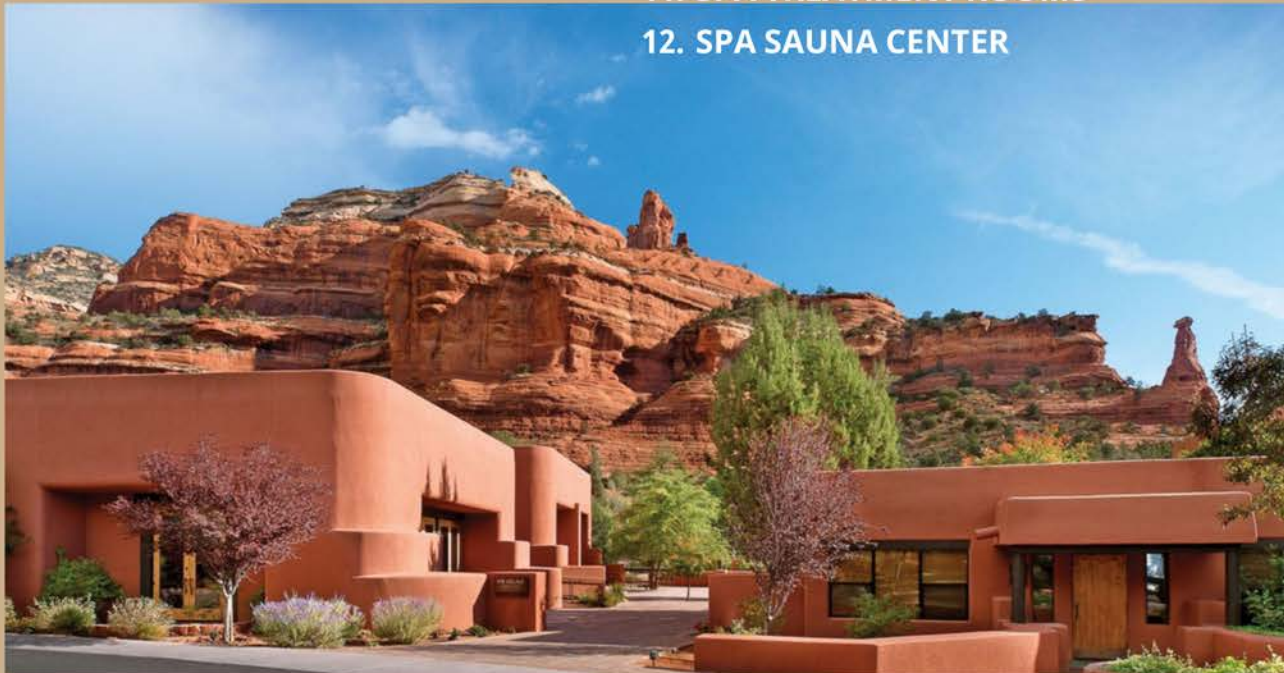


# SITE MAP



## KEY

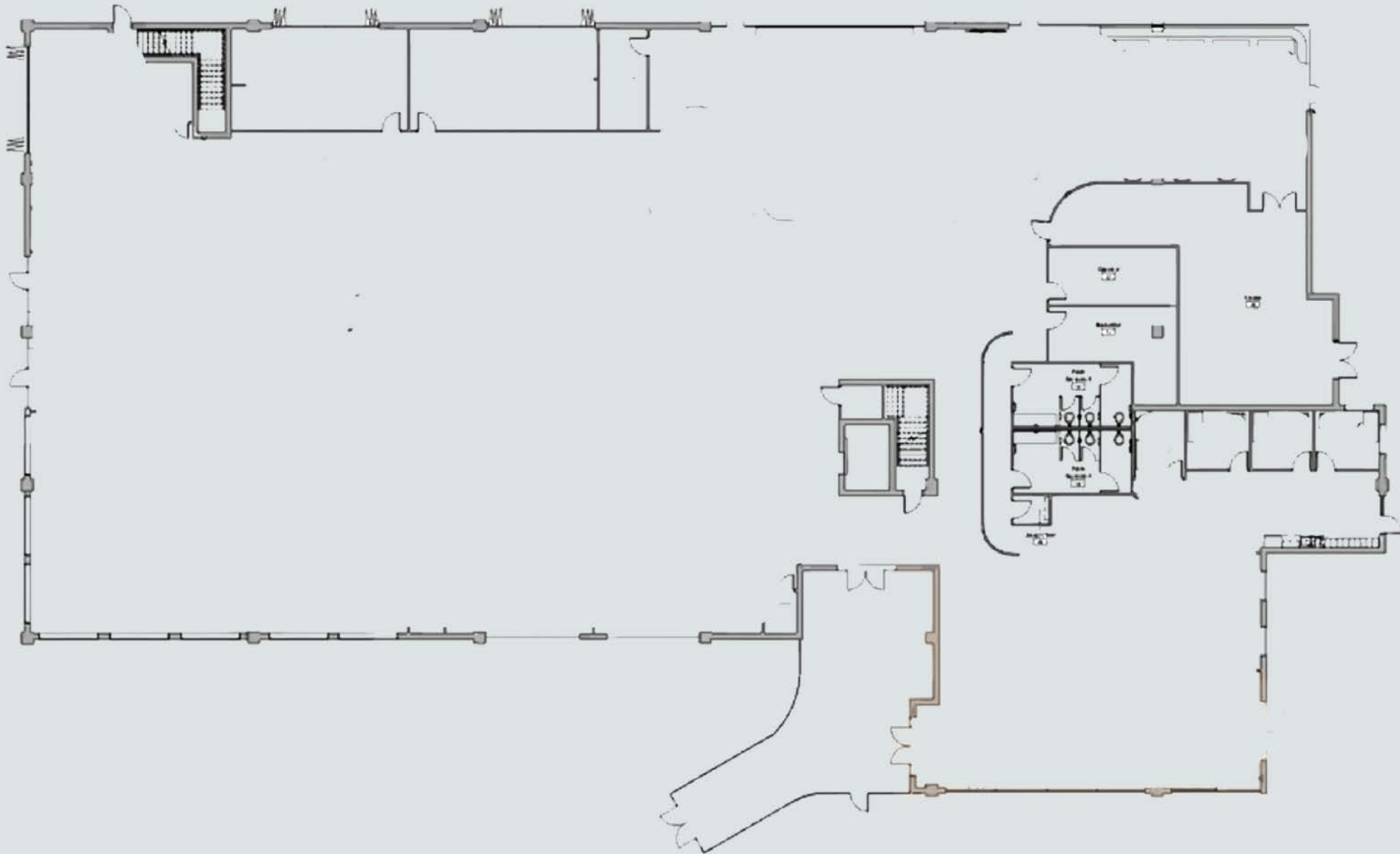
1. PARKING/ DROP-OFF
2. PARKING/ LOADING DECK
3. MAIN BUILDING/GUEST ROOMS
4. ROOFTOP POOL
5. OUTDOOR HYDROPONIC GLASSHOUSE
6. SENSORY GARDEN
7. OUTDOOR WORKSHOP PAVILION
8. OUTDOOR WORKSHOP PAVILION
9. SPA MAIN BUILDING
10. SPA LOCKER ROOMS
11. SPA TREATMENT ROOMS
12. SPA SAUNA CENTER
13. PATIO INDOOR POOL
14. SPA OUTDOOR POOL
15. SPA SPECIALTY SPACES
16. SPA OUTDOOR TREATMENT HUT
17. PATIO OUTDOOR TREATMENT HUT
18. GARDEN WHIRLPOOL
19. GARDEN WHIRLPOOL
21. SPA TRANQUIL COURTYARD
22. PERMACULTURE INDIGENOUS GARDENS
23. OUTDOOR WALKING PATH



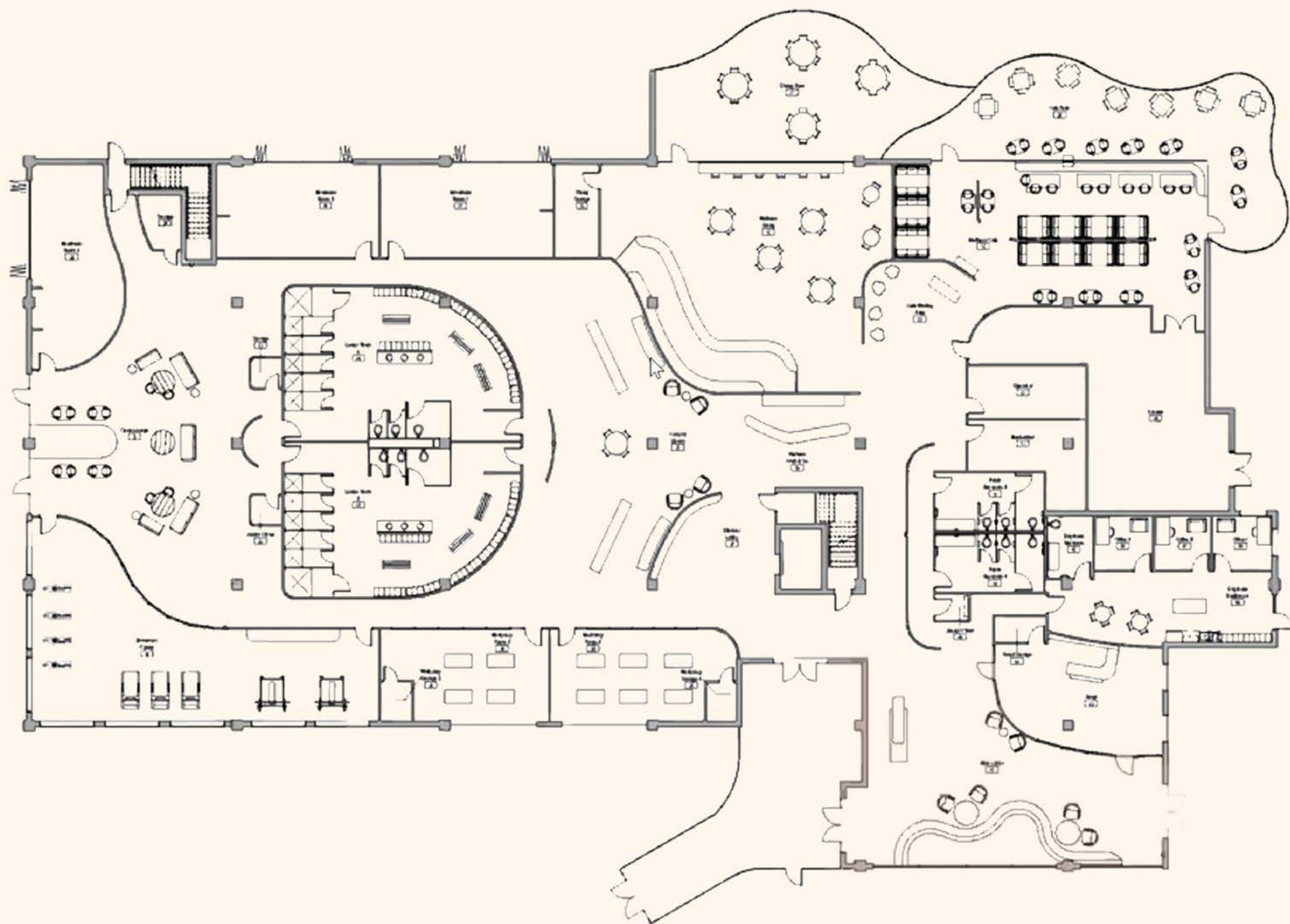
## FACADE

- This is a **2** storey building with a centre courtyard. The courtyard can help save on energy and bills.
- It also includes natural cooling elements as a part of the design like a fountain, a koi pond, thick external walls and double-glazed windows.

# VORTEX - INITIAL PLAN

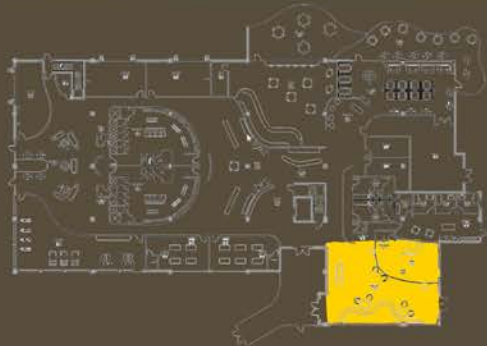


# FIRST FLOOR FURNITURE PLAN



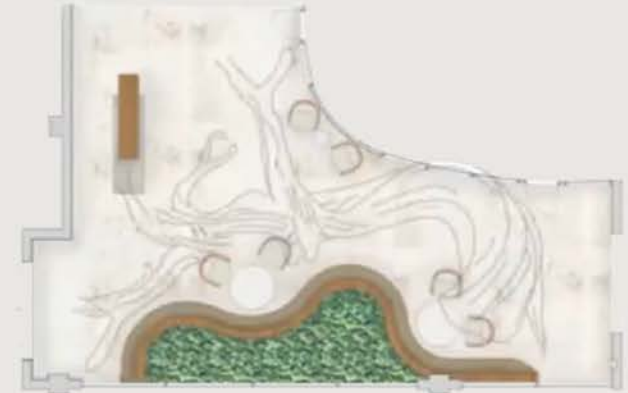


# LOBBY



- The lobby area, a public area right after the entrance, is proposed for visitors to get registration for workshops and spa treatments, as well as get accommodated in one of the hotel rooms.
- The logo design highlighted by the spotlights is implied on the reception counter and backdrop as a focal point.

# ENLARGED PLAN - RECEPTION



- Transparency into retail to incite sales
- Interior garden mirrored by skylight with smart glass allowing for thriving plants and users
- Floor-to-ceiling smart glass windows to provide natural lighting and promote circadian rhythm
- Linear finishes to mimic Sedona's linear rock formations
- Ceiling height and material change subtly encourages way finding.

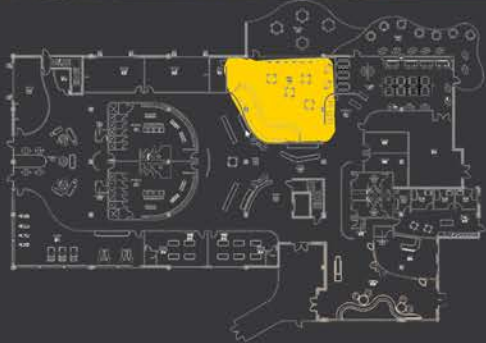
## CUSTOM BENCH SEATING

- Curve mimics canyon topography
- Inner curves allow for touchdown seating groups with tables
- Native plants provide focal point and emphasizes Vortex's mission





# WATER DINING



- showcases organic food produced using aquaponic system where organic waste from aquatic livestock is being used as essential nutrients to grow vegetables.
- Koi pond is used as water source for the Aquaponics.
- It would all be exposed to the guests while dining so they could learn
- Majority of the vegetables would be grown in house, can act as both a supplier to Vortex, as well as the guests and locals.



### 03. WATER DINING



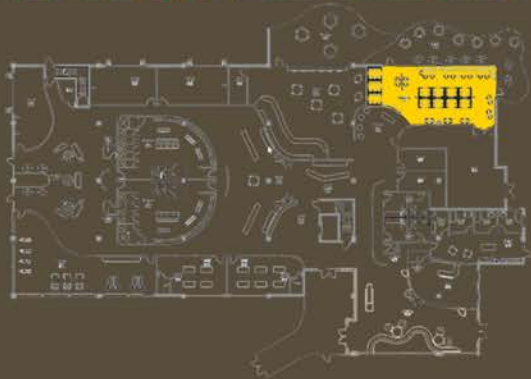


### 03. WATER DINING





# SUNKEN DINING



The design features imagery of "Plank Path - Water Surface - Floating Hut" by making use of the existing floor height difference creating a sunken plaza. Passing by the coffee bar and sales display, one enters the seating area as if walking from the path into water, and then onto the sunken deck. The main volume invites you to look to the LANDSCAP, and rest save the views to the interior and in-between. Customized lamps scatter through the shop as landscape lighting, become beacons of the overall sequence of the space.

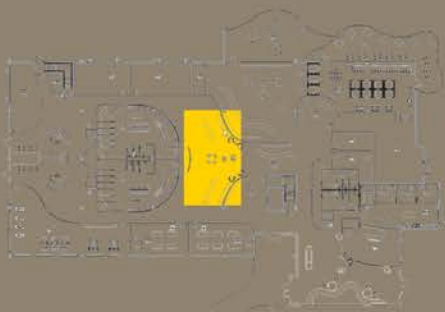


# SUNKEN DINING





# COMMUNITY LOUNGE & INTERACTIVE WALLS



It is a communal area used for waiting or relaxing in and to encourage interactions between people and discussions after exploring the workshops. These discussions would further be facilitated by the interactive walls - teaching people about eco tourism, Climate Change, Carbon footprint & allow them to calculate their own footprint using the smart tabs. Table sets and cozy hanging chair are provided.



# COMMUNITY LOUNGE & INTERACTIVE WALLS



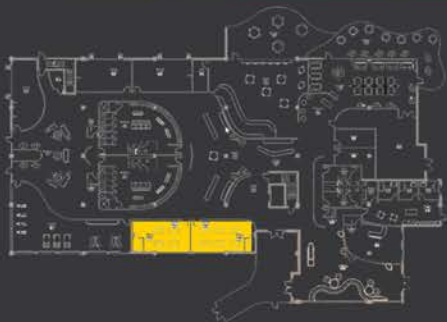


# EDUCATIONAL WORKSHOP CLASSROOMS

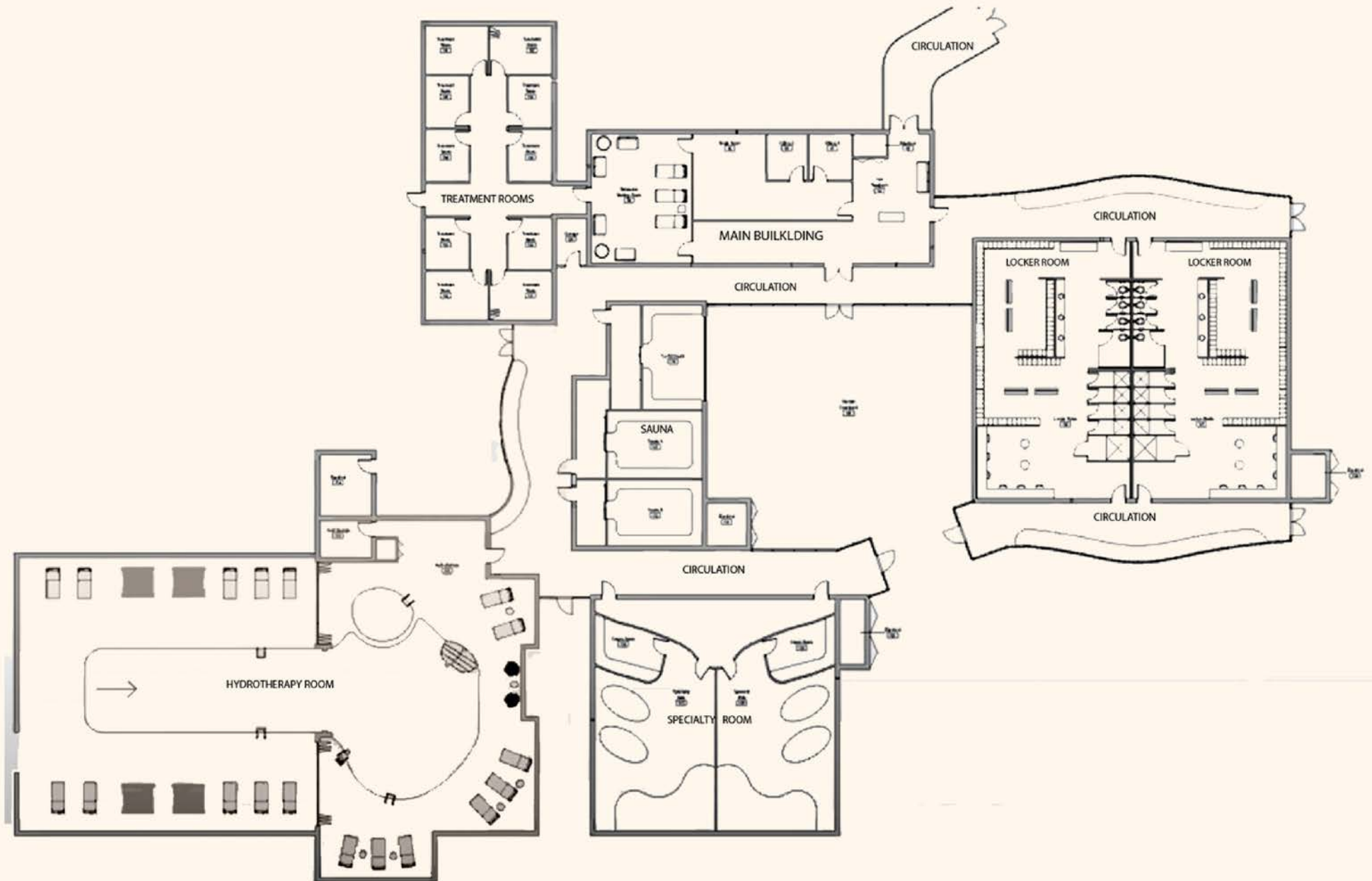


The workshop is a place where people can engage with digitally-augmented farming and grow their own food on-site.

The project pairs sustainable agricultural practices with online user interaction, in which anyone can become an organic food producer. The visitors will enter the pavilion, following an immersive route that leads to a vast indoor hydroponic vegetable garden. Here, anybody can choose to plant seeds in a hydroponic tank, and monitor their growth.



# SPA FURNITURE PLAN





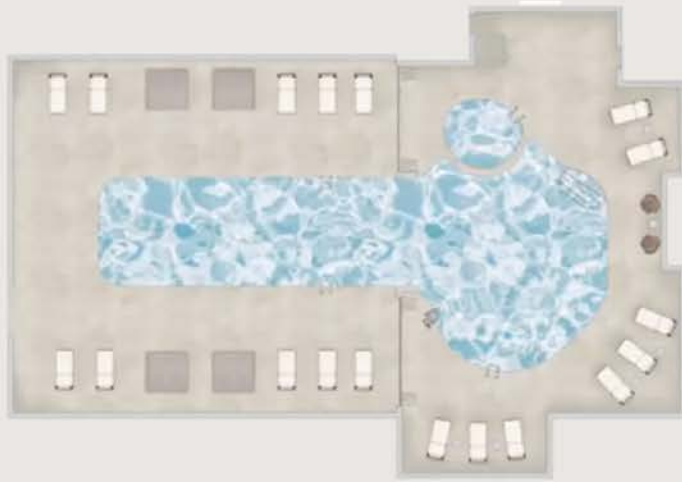
# SPA WALKWAY



- Curve mimics canyon topography
- Sustainable interior wood paneling allows for natural essence
- Sculptural red rock breaks up banquette bench to speak to the location and adds design feature
- Operable windows with smart glass and planters allow seamless integration of exterior to the interior

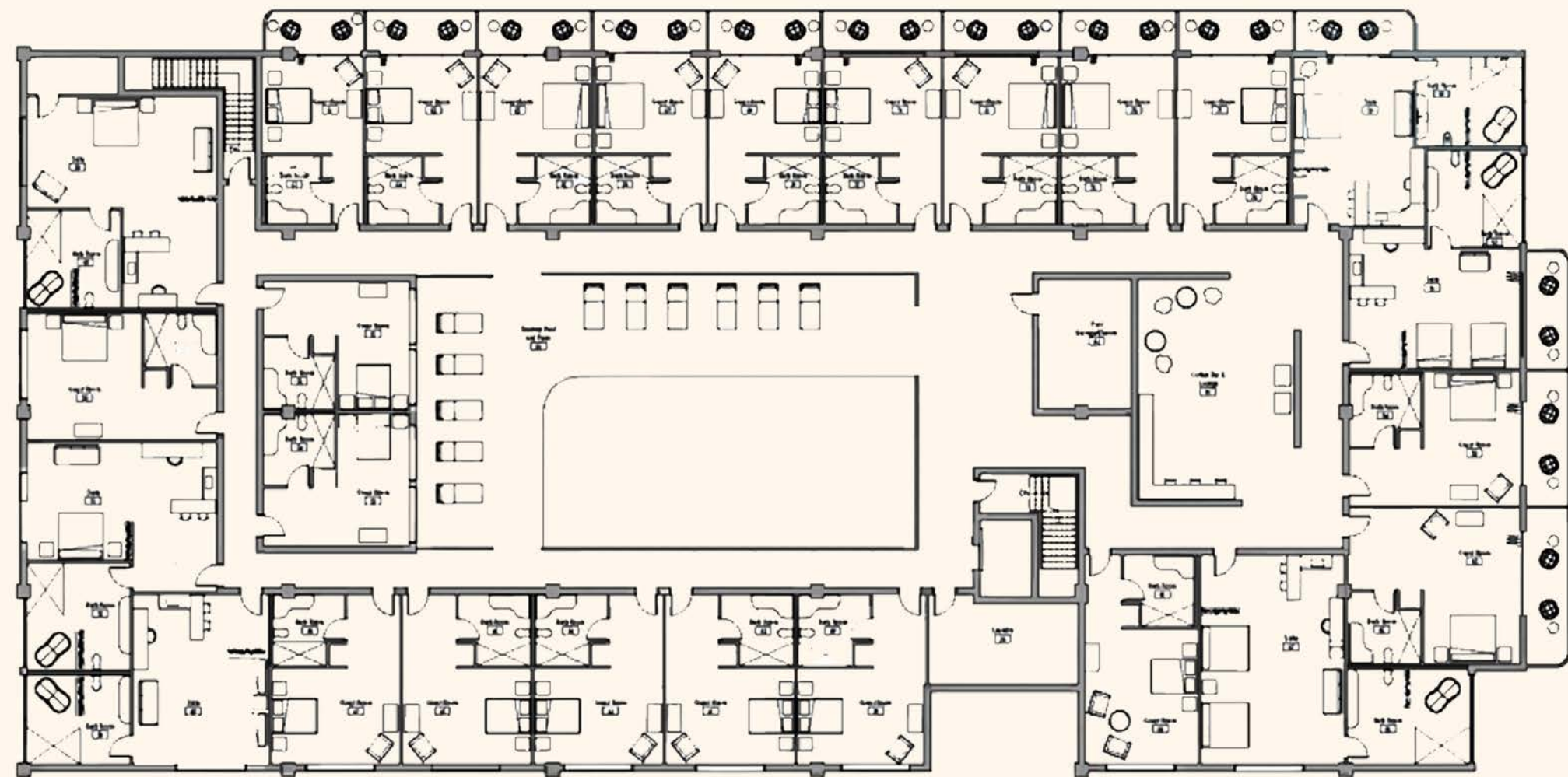


# HYDROTHERAPY ROOM



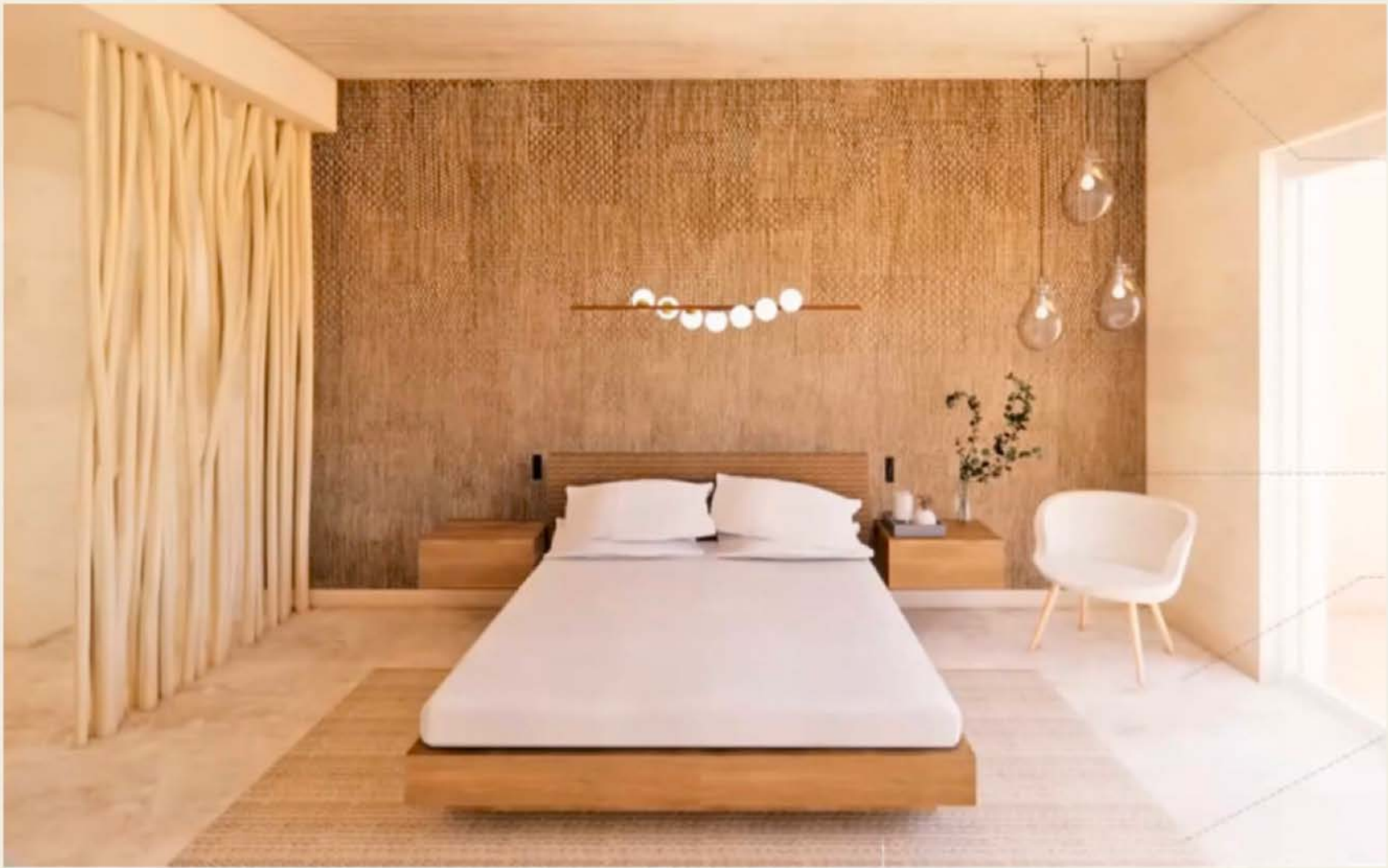
- Indoor/ Outdoor pool for integration with surrounding environment while being conscious about thermal concerns• Saltwater instead of chlorine – benefits user and environment
- Custom floor to ceiling windows double as operable wall doors, allowing spaces to open to one another.

# SUITES - SECOND LEVEL PLAN





# MASTER SUITE



- Neutral tones & linear patterns - pulls inspiration from the environment.
- Custom wood branch partition for **privacy** from entry & hallway.
- Motor shades & controlled lighting allow for **user-oriented experience**.



SCAN FOR PANORAMA



# SUITES - ENLARGED



## CUSTOM BED AND TABLES

- Deeper brown woven backboard creates contrast with bed frame and surrounding areas.
- Cantilever side tables mimic floating bed illusion and include power, functioning as additional storage.
- Low-profile wall-mounted reading lights for personal lighting preferences.

## CUSTOM SHOWER

- Two ceiling mounted rain showerheads to cover more ground
- Shower wall includes shower control panel, handheld shower and 3 body sprays
- Low-flow high efficiency fixtures allow for a luxury yet sustainable experience





# MASTER SUITE KITCHENETTE



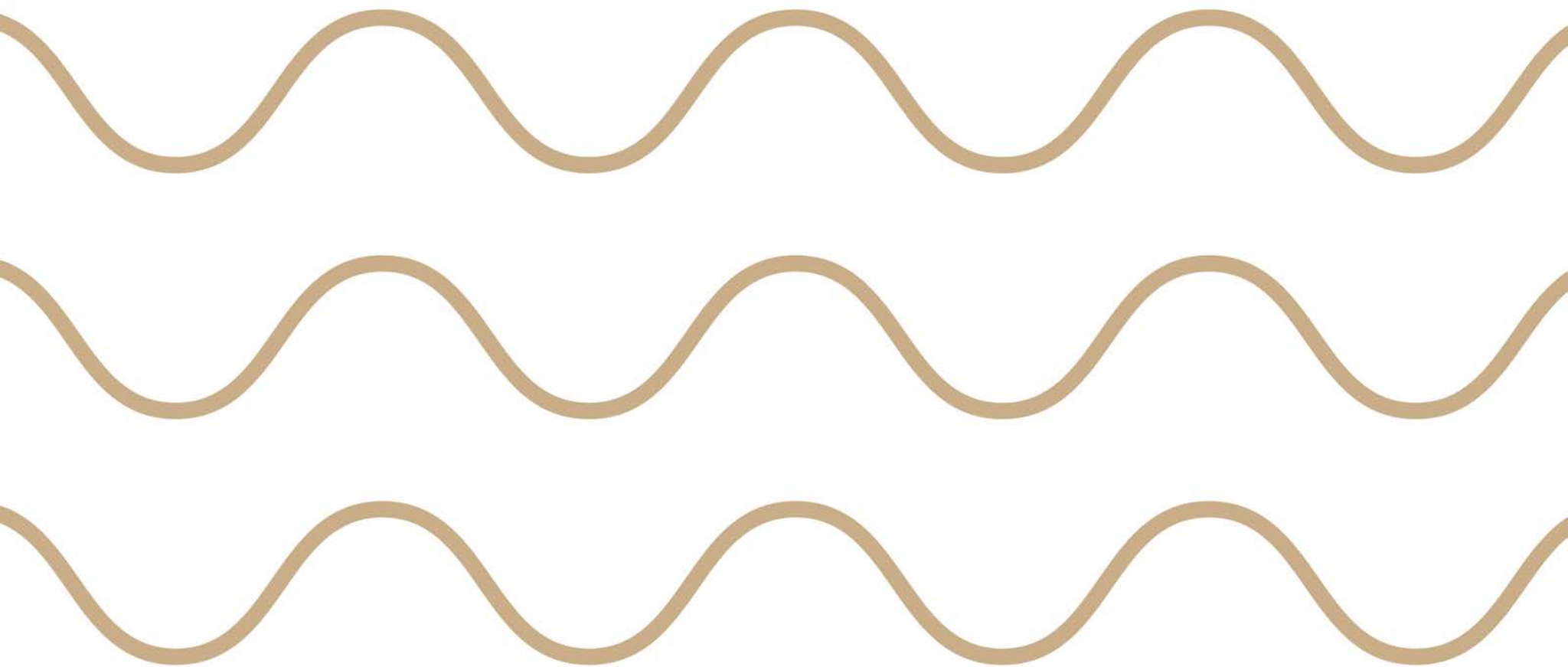
SCAN FOR PANORAMA



# MASTER SUITE RESTROOM







THANK YOU