

ELIZABETH CLARKE

GLASS

Thesis Problem Statement:
Lines exhibit a visual representation of anxieties encountered.





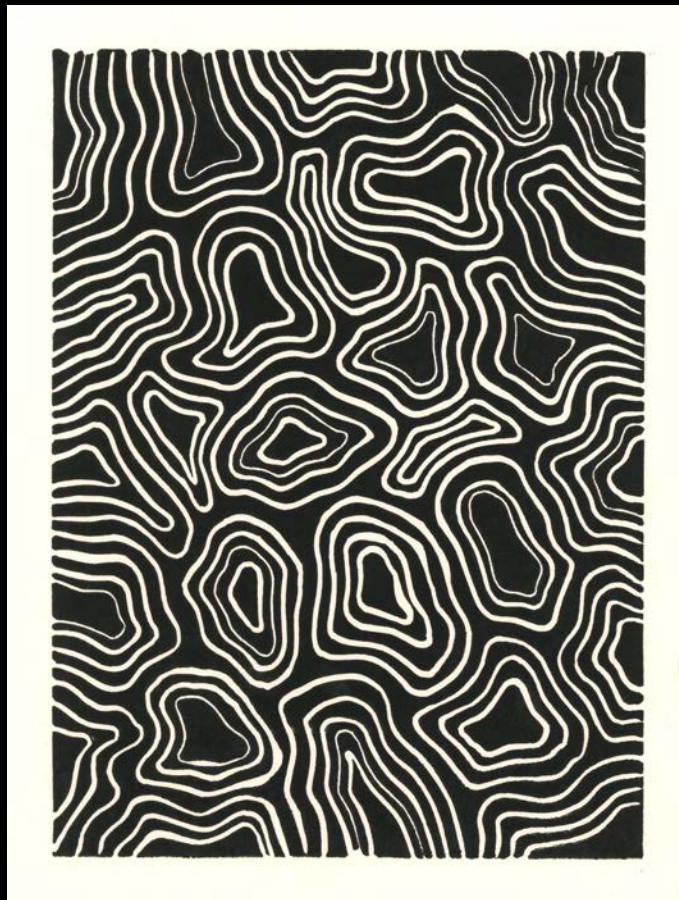
Emesis Emesis Emesis, 2022 Blown and Carved glass 11x9x4in Front of piece



Emesis Emesis Emesis, 2022 Blown and Carved glass 11x9x4in Back of Piece



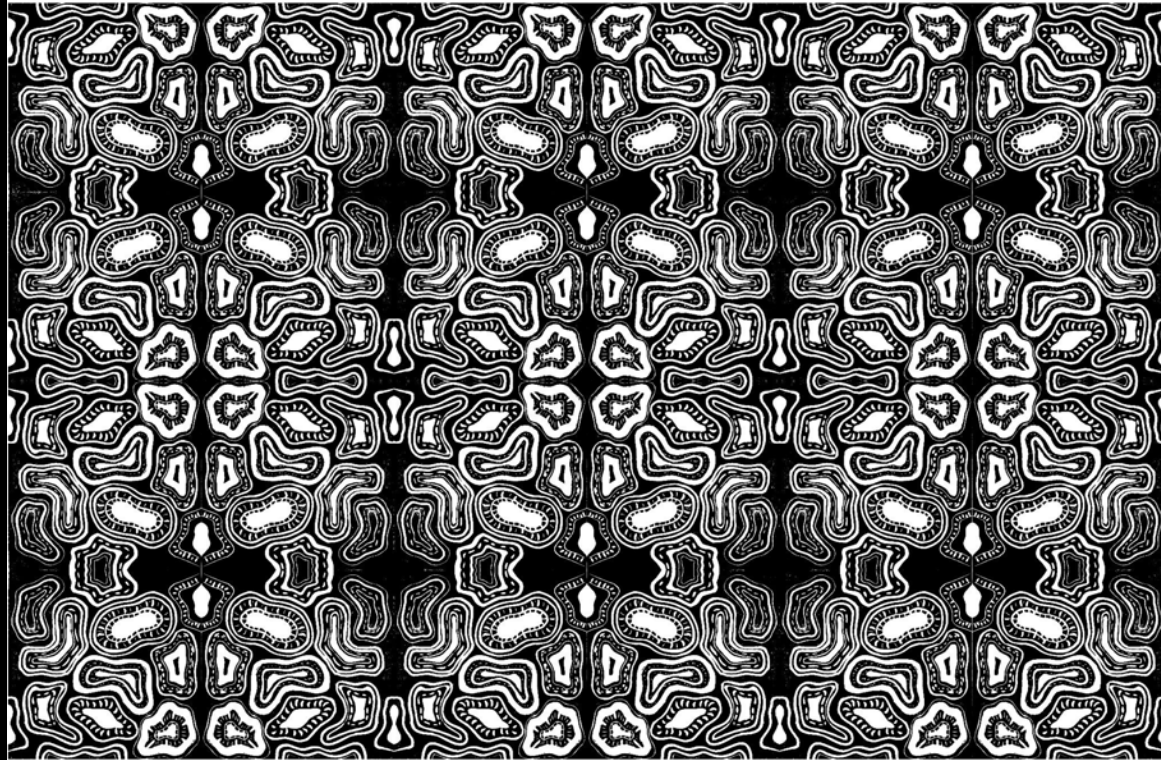
Scopophobia, 2022 Blown Glass 5x5x5in



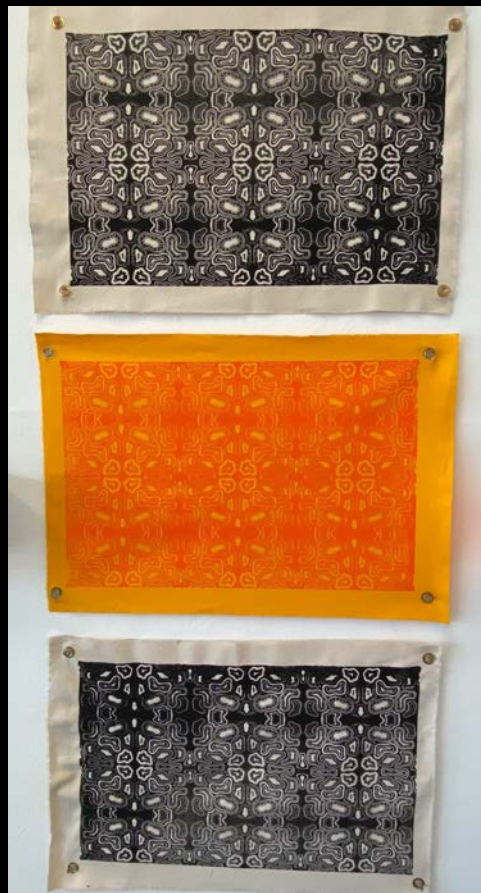
Squish Scrunch Smash, 2023 Relief print on paper 12x10



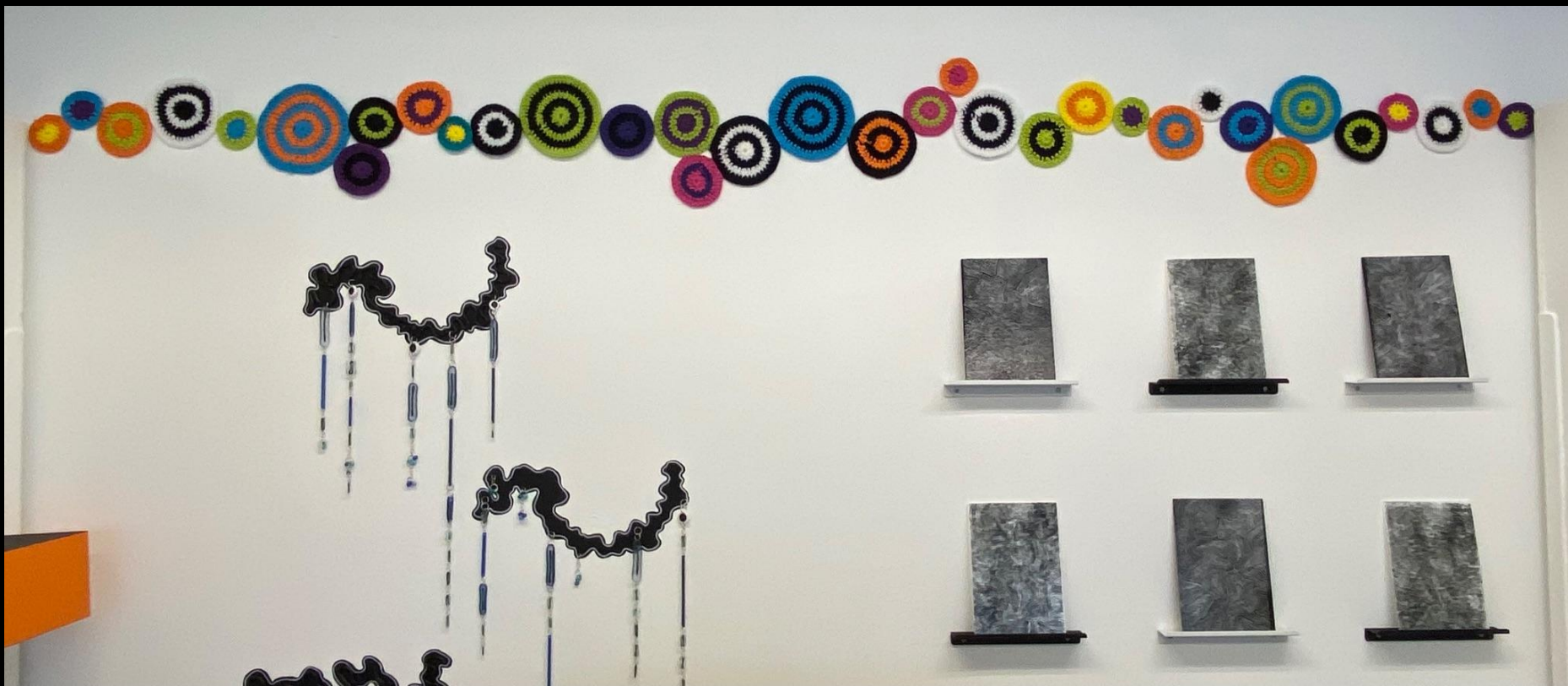
Spiraling Again, 2023 Blown Glass 4x4x4in



Mysophobia, 2023 Screen print on Canvas 12x18in



Mysophobia, 2023 Screen print on Raw Canvas 12x18in



Stuck In a Cycle, 2023 Fiber 9ftx7in



Release, 2023 Glass, Murrini and Stainless steel 18x15in



Release, 2023 Glass, Murrini and Stainless steel 18x15in



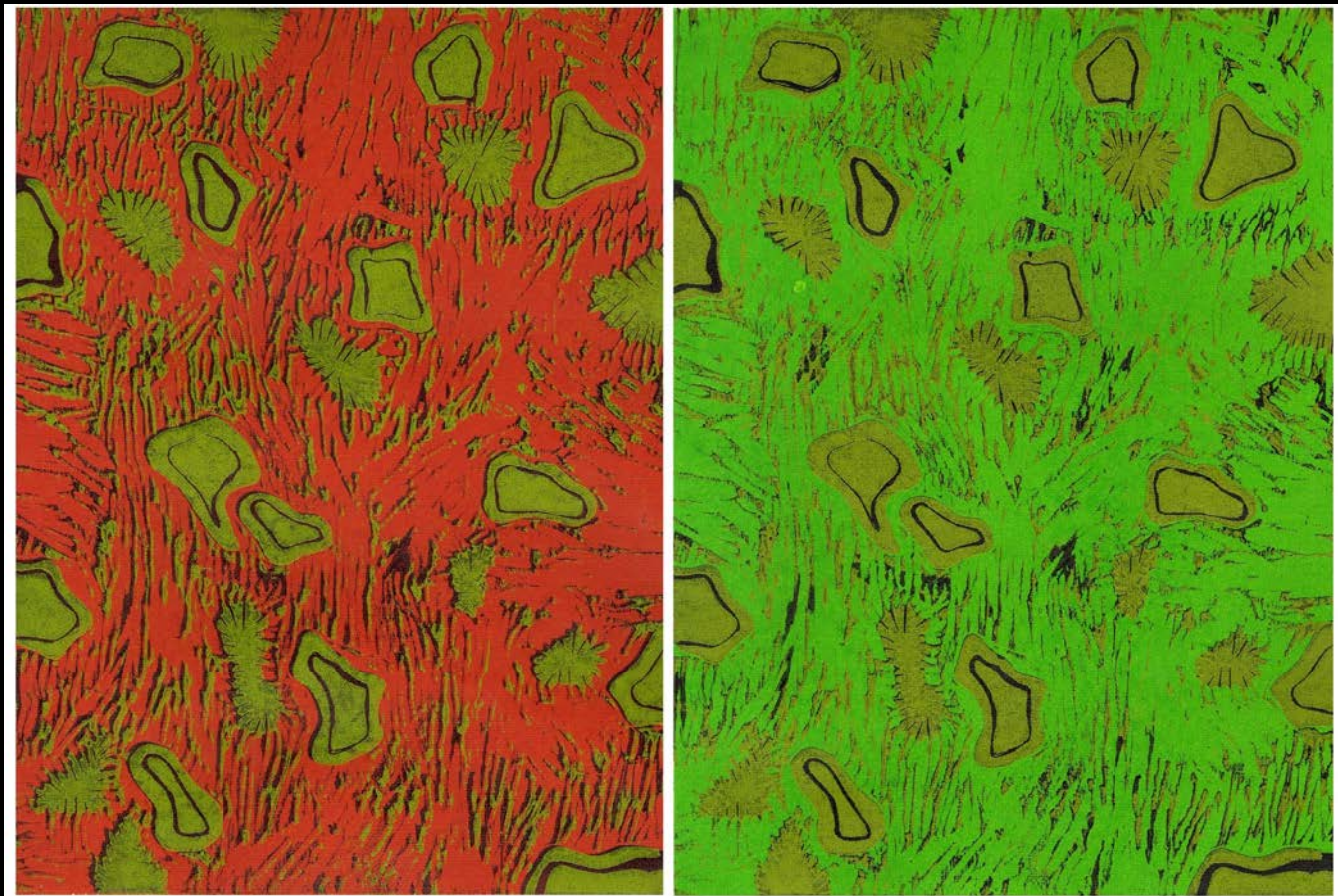
Don't Touch Me, 2023 Kiln Formed Glass 8x8x2in



Overlap, 2023 Sheet glass with screen-printed vitreous enamel 33x16in



Ebb and Flow, 2023 Blown Glass 8x5x5in



Chromaticity, 2022 Reduction print on paper 18x24in



Parasite, 2022 Blown and Carved glass 12x3x3in Image 1



Parasite, 2022 Blown and Carved glass 12x3x3in Image 2



Melioration, 2023 Blown Glass 8x8x3in Image 1



Melioration, 2023 Blown Glass 8x8x3in Image 2



Lipoma, 2023 Blown and carved glass



Lipoma, 2023 Blown and carved glass



Dont Bite The Hand That Feeds, Blown and carved Glass 11x9x4in



Dont Bite The Hand That Feeds, Blown and carved Glass 11x9x4in



Misery Loves Company, Blown and Carved Glass



Misery Loves Company, Blown and Carved Glass



Misery Loves Company, Blown and Carved Glass