

# Visiting Cleveland Institute of Art

Yellow arrows are if  
you are coming from  
interstates

I-90  
I-71  
I-77

Everyone takes  
pink arrows  
to CIA campus

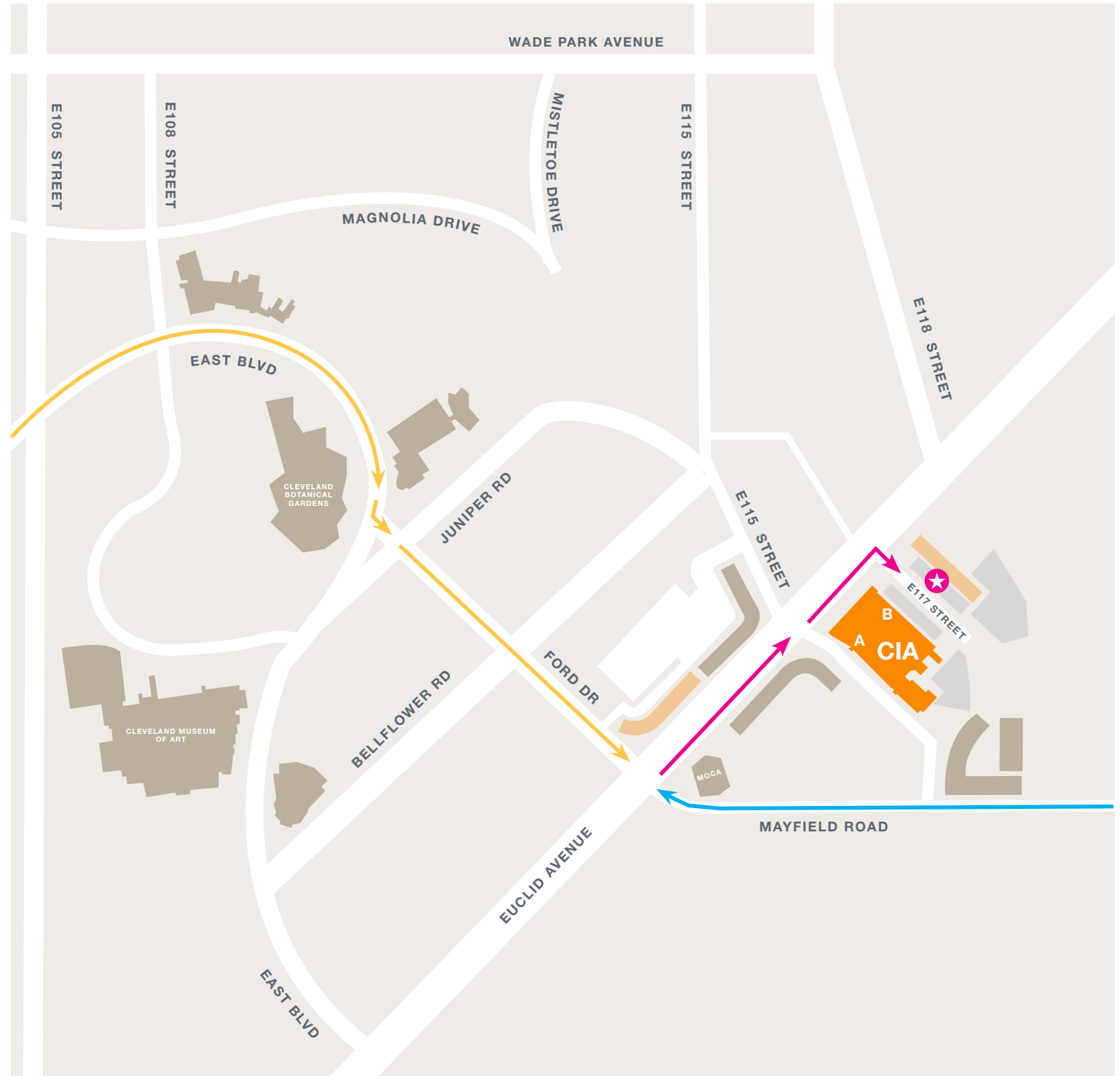
Blue arrows are if you are  
coming from interstates

I-271  
I-480  
Ohio Turnpike

**Cleveland Institute of Art**  
11610 Euclid Avenue  
Cleveland OH 44106

**Enter building through  
Entrances A + B**

[cia.edu/map](http://cia.edu/map)  
216.421.7000



## Driving Instructions

**Address: 11610 Euclid Avenue, Cleveland OH 44106**

**From I-90 East and West** Take exit #177 to Martin Luther King Jr. Dr (MLK Dr). Proceed south through Cleveland Cultural Gardens for three miles to the traffic light at E105th St. Go straight through the light; almost immediately, there's another light, where you'll turn left onto East Blvd. Take East Blvd approximately 1500ft to Ford Dr (a "Y" in the road). Take Ford Dr two lights to Euclid Ave, where you'll turn left (the Museum of Contemporary Art is across the street). Take Euclid to E117th St; turn right.

**From I-77 North or I-71 North** Take I-90 East to exit #177. Follow the directions for *I-90 East and West*.

**From I-271 North** Take Exit #32 to Cedar Rd. Bear right onto Cedar Rd and proceed west eight miles to a steep hill and traffic light at the intersection with Murray Hill Rd. Turn right on Murray Hill Rd, bear right at the light, continuing on the red brick road. Turn left on Mayfield Rd. Take Mayfield to Euclid Ave; turn right. Take Euclid to E117th St; turn right.

### From Cleveland-Hopkins International Airport

Take I-71 North to I-90 East. Follow the directions from *I-90 East and West*. Or take the RTA Red Line rapid transit to the Little Italy/University Circle stop; our campus is just behind this stop. Taxi/ridesharing services from the airport are also available; they will cost approximately \$55.

**From downtown Cleveland** Follow Chester Ave east for three miles to University Circle. Turn left on Euclid Ave. Turn right at E117th St. Alternatively, the RTA "Healthline" stops in front of our school, and can be caught anywhere along Euclid Ave.

**Public Transportation** RTA's Red Line rapid transit Little Italy/University Circle is just behind our building. RTA's "Healthline" also stops right in front of our building, and can be connected to from the downtown Terminal Tower stop on the rapid lines or major bus lines. Check with RTA on their public bus schedules and stop locations. [riderta.com](http://riderta.com)

### From the Greyhound or Amtrak Station

We recommend taking a taxi or rideshare service to CIA; the cost will be approximately \$20.

## Hotels in the neighborhood

Mention the Cleveland Institute of Art for a special rate

### Courtyard by Marriott Cleveland University Circle

2021 Cornell Rd  
Cleveland OH 44106  
216.791.5678  
[marriott.com/clece](http://marriott.com/clece)  
5-minute walk

### Glidden House

1901 Ford Dr  
Cleveland OH 44106  
216.231.8900  
[gliddenhouse.com](http://gliddenhouse.com)  
5-minute walk

### Additional hotels in the area

Approx 5 minutes from University Circle

### Holiday Inn Cleveland Clinic

8650 Euclid Avenue  
Cleveland OH 44106  
216.707.4200  
[hiclevelandclinic.com](http://hiclevelandclinic.com)

### DoubleTree Tudor Arms

10660 Carnegie Ave  
Cleveland OH 44106  
216.455.1260  
[thetudorarms.doubletree.com](http://thetudorarms.doubletree.com)

### Intercontinental Hotel

9801 Carnegie Ave  
Cleveland OH 44106  
216.707.4100  
[ihg.com/intercontinental/cleveland](http://ihg.com/intercontinental/cleveland)

### Residence Inn

1914 E 101st St  
Cleveland OH 44106  
216.249.9090  
[marriott.com/cleuv](http://marriott.com/cleuv)